

IN THIS ISSUE... 3 GREAT HOUSES, MASSIVE CHANGE, 100% DESIGN, ORGATEC, LARS SPUYBROEK AND MORE

DESIGN ARCHITECTURE ART

# AZURE

BRUCE  
MAU'S  
MASSIVE  
CHANGE

EXPERIMENTAL  
DUTCH  
ARCHITECTURE

SMART  
FLOORING

THE  
BEST  
OF  
THE  
FALL  
SHOWS

PLUS  
LIFE  
SUPPORT  
FOR  
PLASMA  
SCREENS



3  
GREAT  
HOUSES

U.S./CAN \$6.95  
WWW.AZUREMAGAZINE.COM  
PM40048073 R09064



78624 70029 2

CANADA POST  
REGISTRATION # 6577

LED  
AMY MULHERN  
GLOBAL CONTRACT  
1350 FLINT RD.  
DOWNSVIEW, ON M3J 2J7

41/2  
16(T)



**3g**  
Sit-able sculpture by Mari-Ru Oda is a large sculpted piece cast stone.

**3h**  
Hover-spoons by Susana Shav stainless steel long-handled spoons designed to balance delicately the rim of a cup or bowl.

**3i**  
Time Travel Postable Clock by Jackson and Paul Stafford for is a piece of printed, cut card fitted with a clock mechanism

**3j**  
Otto by Andrew Tye is a modular desk and storage system for home or office.

## WORK AND PLAY AT IIDEX IN TORONTO

By Elizabeth Pagliacolo

**4a**  
Kline's Solito collection is made of black walnut and brushed metal, and is suitable for residential, corporate or hospitality spaces.

At the 20th anniversary of IIDEX/NeoCon this past fall, the focus was on flexibility and fun, with office areas drawing ideas from the lounge and classroom, and health care environments becoming ever more tech-savvy. The sprawling booths of major office furnishings companies Teknion and Nienkämper mediated conference areas with lush soft seating; commercial seating manufacturer Keilhauer presented multi-coloured stacks of Andrew Jones's Ripple chairs against a blackboard backdrop. In an impressive display, Globalcare evoked the ideal hospital – if such a thing exists – with tech-equipped tables, wall-mounted wardrobes and the convertible At-Eez lounge/sleeper chair. The trend to crossover between office and hospitality, and hospital and home, was marked.

Smaller Canadian companies, such as Kline, Sodi and Futé, held their own, introducing unique items not married to any setting. "Everything's getting mixed up now," says Sodi's Dian Carlo, whose fine arts background informed the simplicity of Sodi's metal nesting tables. Kline, a company that's been gain-



# 2005 DESIGN SHOWS



**3k**  
**Pill**, by Simon Pengelly for Pad, is a large roto-moulded polyethylene table with built in magazine rack that serves as a support for the plastic shell. Also available in Corian.



**3l**  
**Pendant** is an expressive diffuser from Egg, a South African design firm.

ing momentum since its debut at last February's Interior Design Show – so much so that it's had to regroup to accommodate a growing client list – debuted a collection of occasional tables and bar stools.

Keynote addresses reflected IINDEX's effort to promote progressive ideas on design. For example, Thomas Homer-Dixon, author of *The Ingenuity Gap*, discussed how major social and ecological issues require proactive design solutions, such as energy-efficient architecture. Organized with the same intention, but showcasing a plethora of floor and wall coverings companies at the expense of ideas, the Greenlife exhibit was somewhat anemic. Still, the recipient of the gold award for sustainable design was strong, despite the mere eight screws holding it together. The Kingsey bench, by Messier Designers for behemoth Quebec paper and plastics company Cascades Re-Plast, features recycled plastic planks and an aluminum form. But as designer Patrick Messier explained, "If we had presented sustainable furniture made of two-by-fours we could not have seduced the jury. They liked the quality of the manufacturing, the details of the assembly and the integrated structure." The overall message? Good design can lead to a clear conscience. **A**

For sources see page 96

**4b**  
 The **Kingsey bench** by Messier Designers for Cascades Re-Plast features 100 per cent recycled plastic planks; it's held together by eight screws in eight circular joints.

**4c**  
 Designed with overnight hospital visitors in mind, Globalcare's **At-Eez** is an upholstered seat with four double-wheel casters that turns into a bed.

**4d**  
 Brazilian-Italian venture Augustan Doimo showed off the **Canoe Junco**, a bench that blends rattan with stainless steel.



## HEIMTEXTIL

**January 12 to 15**  
 Frankfurt's Heimtextil – the world's foremost international trade fair for residential and commercial textiles – features several exhibits charting trends in bedding, floor coverings and textiles. [www.heimtextil.messefrankfurt.com](http://www.heimtextil.messefrankfurt.com)

## SALON DU MEUBLE

**January 13 to 17**  
 This year Salon du Meuble, the Parisian home and gift expo, presents baroque-flavoured architecture, design and materials; interiors by Francois Azambourg and Jacob + MacFarlane; and a "modern thermal station" by Italian industrial designers Roberto and Ludovica Palomba. [www.salondumeuble.com](http://www.salondumeuble.com)

## IMM COLOGNE

**January 17 to 23**  
 Women rule at this year's imm Cologne, with Patricia Urquiola and Hella Jongerius creating unique environments for the ideal houses exhibit. Another feature, imm cuisinale, presents innovative kitchens and a cooking competition. [www.imm-cologne.de](http://www.imm-cologne.de)

## MAISON&OBJET

**January 28 to February 1; September 2 to 6**  
 This twice-yearly Paris expo has three parts: Maison&Objet, Now!design à vivre and Scènes d'intérieur. In January, Maison&Objet honours André Putman and Eric Gizard; while Now! names Patrick Norguet – who's created products for Artifort and Cappellini, among others – designer of the year. Supporting artisan/designers, Scènes d'intérieur will include ceramics by Samantha Otto, and a surrealist tea set by Charles Anastase. [www.maison-objet.com](http://www.maison-objet.com)

## STOCKHOLM FURNITURE FAIR

**February 9 to 13**  
 Kicking off the 2005 Year of Design, a campaign seeking to promote design throughout Sweden, the Stockholm Furniture Fair begins with a gala on February 9. The guests of honour, French brothers Ronan and Erwan Bouroullec, will create a grand design for the entrance hall. [www.stockholmfurniturefair.com](http://www.stockholmfurniturefair.com)

## INTERIOR DESIGN SHOW

**February 10 to 13**  
 See preview on page 32. [www.interiordesignshow.com](http://www.interiordesignshow.com)

## AMBIENTE

**February 11 to 15**  
 Frankfurt's Ambiente boasts many special features, including Man & Humanity, which exhibits products made by Dutch design students and Peruvian craftspeople under the auspices of the Eindhoven Design Academy; as well as the special exhibits Foodesign, by Fratelli Guzzini, and Waterbar by Paola Navone. [www.ambiente.messefrankfurt.com](http://www.ambiente.messefrankfurt.com)

## SALONE INTERNAZIONALE DEL MOBILE

**April 13 to 18**  
 The most prestigious design expo in the world, Milan's Salone Internazionale del Mobile coincides with the Furniture Accessories Exhibition, the biennial EuroLuce lighting show and the annual showcase of radical concepts SaloneSatellite. [www.cosmit.it](http://www.cosmit.it)

## INTERNATIONAL CONTEMPORARY FURNITURE FAIR

**May 14 to 17**  
 Focused on contemporary design the residential market, New York's is the biggest fair outside of Europe with 18,000 trade professionals or exhibitors – and the place to see modern and irreverent design. Designers show off at the annual event Raw: The Next Generation. [www.icff.com](http://www.icff.com)

## SIDIM

**May 26 to 28**  
 The main components of Montreal annual design are Tribune des Designers displaying the works of Quebec designers; Série Limitée, a platform for artisans and their original one-off and Quartier Affaires, a showcase office furnishings. [www.sidim.ca](http://www.sidim.ca)

## NEOCON

**June 13 to 15**  
 Chicago's huge contract expo features everything from architectural products to technology to textiles for commercial institutional and residential interiors. [www.mmart.com/neocon](http://www.mmart.com/neocon)

## ABITARE IL TEMPO

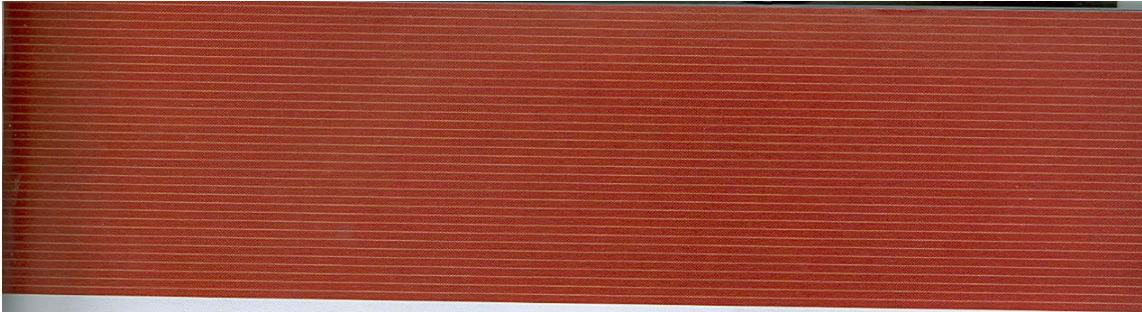
**September 15 to 19**  
 Held in the ancient city of Verona, Abitare il Tempo celebrates its 20th anniversary, and a growing reputation for exceptional exhibits. Encompassing everything from furniture and textiles to bathrooms and kitchens, the expo also includes workshops by famous architects and conceptual installations exploring novel interiors. [www.veronafiere.it/abitareiltempo](http://www.veronafiere.it/abitareiltempo)

## 100% DESIGN

**Sept 22 to 25**  
 London's annual exposition of contemporary interior products, 100% Design, is a showcase for young designer-makers with world renowned manufacturers, creating innovative and vibrant commercial showcase for the best and latest furniture, lighting, textiles, flooring, accessories, bathrooms and kitchens. [www.100percentdesign.co.uk](http://www.100percentdesign.co.uk)

## IINDEX/NEOCON

**Sept 22 to 23**  
 Toronto's big contract expo attracts about 15,000 trade professionals a year, and features the special exhibit OfficeExpo, Greenlife and Jumpstart. [www.iindexneocon.com](http://www.iindexneocon.com)



**diet + soda**

innovative and affordable solutions

*GLOBALContract*

The Global Group 1350 Flint Road., Downsview ON Canada, M3J2J7 Sales & Marketing T 1-877-446-2251 F 416-667-0338  
Visit us on the Internet at [www.globalcontract.com](http://www.globalcontract.com) © 2004 All Rights Reserved. 400-016