



GLOBALcare
Quality of Life Products™



THE FLEMMING SYSTEM™

The Flemming System's functional design and therapeutic features have earned it an impeccable reputation among health care professionals through Europe and North America. Working very closely with physiotherapists, ergo therapists and convalescent patients, Flemming Hvidt, internationally acclaimed Danish architect devoted more than twenty years to creating and developing a seating system to address the needs of the health care professional.

Flemming™



GC7511-23



GC7534



GC7533



GC7530-25

GC7537



GC7511-25



Flemming



GC7530-21

UPHOLSTERY

- Heavy-duty and durable yet soft to the touch
- Surface seams eliminated to avoid skin shearing
- Anti-bacterial, anti-fungal and anti-microbial resistance
- Upholstery is available in plain colour and patterned designs. It offers enhanced resistance to discoloration from food stains, is moisture proof and very durable
- Non-rust nylon zippers facilitate easy maintenance and replacement
- Fire retardant and flame resistant

NECK REST

- Adjustable neck rest ensures head and neck alignment
- Supports cervical vertebrae

MOLDED FOAM

- Optimum density for comfort, support and durability
- Fire retardant and flame resistant

BACK

- Built-in trunk and lumbar support for enhanced comfort
- Optional back angle adjustment available (See "V" function below)

ARMRESTS

- Easy grip armrest allows for ease of entry and exit of chair
- Removable padded armrest inserts available (see inset below)

FRAME

- Flared legs add stability
- Specially formulated finish is impervious to many domestic and institutional stains
- Oak or maple hardwood with mortise and tenon joints provide superior construction

SEAT

- All seats are removable and replaceable
- Select from three seat cushion options for your personal comfort
- Depth and angle adjustment on selected models (See "U" function below)
- Seat design and construction help to prevent bottom-out syndrome, enhancing comfort
- Radius front edge with adjustable seat depth ensures lower leg circulation
- Self-draining seat prevents puddling of fluids from spills or incontinence



Chair tray with quick release for attachment to chair frame



Padded armrest inserts

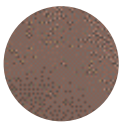


Optional "U" function three position adjustable seat angle

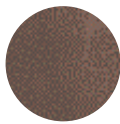


Optional "V" function four position adjustable back angle

Standard GLOBALcare Wood Finishes



QMM Mahogany



WAM Walnut



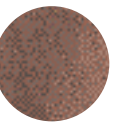
ANM Natural



MOO Medium Oak



SOO Silver Oak



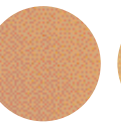
ACM Cherry



LOO Light Oak



AWM Maple



AHM Honey



EOM English Oak

Global - Canada
560 Supertest Road Downsview Ontario Canada M3J 2M6
Tel (416) 661-3660 (800) 668-5870
Customer Service: Fax (800) 361-3182
Government Customer Service: Fax (416) 739-6319

Global - U.S.A.
17 West Stow Road P.O. Box 562
Marlton New Jersey U.S.A. 08053
Tel (856) 596-3390 (800) 220-1900
Fax (856) 596-5684

Global - International
560 Supertest Road Downsview
Ontario Canada M3J 2M6
Tel (416) 661-3660 (800) 668-5870
Fax (416) 667-1821

GGI Office Furniture (UK) Ltd.
Global Way Darwen
Lancashire UK BB3 ORW
Tel +44(0) 1254 778500
Fax +44(0) 1254 778519

Visit us on the World Wide Web at www.globaltotaloffice.com

Offices throughout Canada, United States, United Kingdom, France, Australia and Brazil. Distribution around the world. A member of the Global Group.

© 2001 GLOBALcare. Trade-Marks of GLOBAL TOTAL OFFICE. These products may be covered by one or more issued patents or pending patent applications in Canada, the U.S. and elsewhere. All intellectual property rights in applicable trademarks, patents and industrial designs are strictly reserved. Specifications are correct at time of printing. Printed in Canada. Creative / Global Group Design Center 040701

